

WONG
AMAT
TOWER

THE ULTIMATE **BEACHFRONT** HIGH-RISE





**THE WONG AMAT TOWER
IS A STATE-OF-THE-ART
BEACHFRONT HIGH-RISE
ON NAKLUA SOI 16,
NORTH PATTAYA.**

A mere stone's throw from Wong Amat beach, the Wong Amat Tower's serene location and ultra-modern design combine to create an unparalleled living experience in Pattaya.

All apartments and public spaces in the Wong Amat Tower offer endless vistas from morning to night thanks to the transparent glass walls from floor to ceiling. State-of-the-art engineering enables other key features such as dual infinity pools on the ground floor and rooftop, a private elevator system for the premium ocean-front apartments, and fewer structural columns throughout the building for increased liveable floor space.

The Wong Amat Tower is positioned in a tranquil, seafront environment, and is yet conveniently situated only minutes from downtown Pattaya. Picture a Tai chi practice at sun rise; a cold beer on the beach with the sand between your toes; enjoy the waves while windsurfing, sailing or swimming; anything is possible at the Wong Amat Tower.



KEY DETAILS:

DEVELOPMENT NAME:
Wong Amat Tower

PRODUCT TYPE:
Freehold condominium

LOCATION:
Naklua Soi 16

FLOORS:
38

**TOTAL NUMBER
OF APARTMENTS:**
361

APARTMENT TYPES:
Standard studio apartments of 40-43 sqm,
1 bedroom from 47-65 sqm, 2 bedrooms 92
sqm, 1 bedroom duplex from 64-66,5 sqm.

CONSTRUCTION START:
construction started

EXPECTED COMPLETION:
Q2 2014

FEATURES & AMENITIES:

- Beachfront location with spectacular views of Pattaya Bay
- Situated just 50m from the sea
- Soaring lobby area with shallow ponds, wall gardens & exterior lounge area
- Ground floor restaurant & cafe
- High-speed elevators, with additional private elevator system for the deluxe 2 bedroom apartments
- Sky-lit rooftop infinity swimming pool with Jacuzzis, waterfalls and rain curtains
- Floor-to-ceiling glass exterior walls throughout the building
- In-house fitness club with spa & sauna facilities
- Designer hallways
- Separate, covered parking complex with rooftop lawn
- Child's playground
- Massive ground floor infinity-edge swimming pool
- Fully staffed reception with 24-hour hotel-like concierge services
- Keycard entry system & 24-hour on-site security with CCTV
- Free Wi-Fi throughout the building

PAYMENT TERMS:

Foreign Ownership

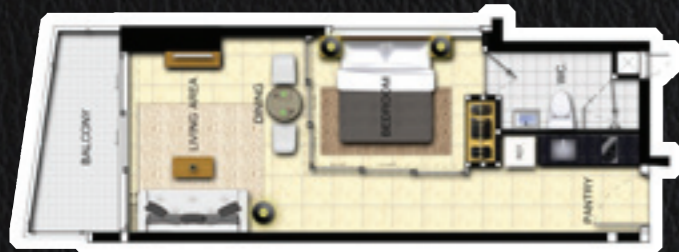
- **50 000 Baht** Reservation
- **20%** Contract after 14 days
- **20% x 3** payments every 6 months
- **20 %** on key (Q3 2014)

Thai / Thai company ownership:

- **50 000** Baht reservation
- **10%** Contract after 14 days
- **1% x 20** monthly payments
- **70%** on key (Q3 2014)



APARTMENT SPECIFICATIONS:



Type A
47 sqm

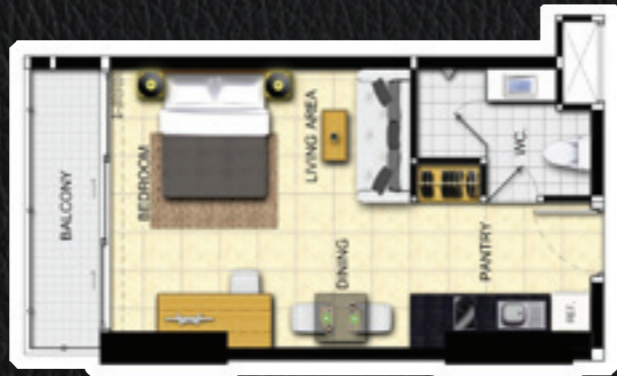
- Luxurious Italian fitted kitchens
- European-standard fitted bathrooms
- Pre-installed Samsung air-conditioning systems
- Quality 60x60 cm porcelain floor tiles or equivalent
- Internal tempered glass doors gypsum ceilings with concealed atmospheric lighting
- Gypsum ceilings with concealed atmospheric lighting
- Built-in wardrobes and kitchen cabinets
- Private balcony in every apartment
- ISO-9000 Aluminium window and balcony frames
- Electric water heater systems
- Fire & lighting protection including safety detector systems
- Solid & stylish "Scorpion" steel-core entry doors

Type B
49 sqm



Type C
43 sqm

Type D
40 sqm



Type E
40 sqm

Type F
92 sqm



Type G
92.5 sqm



Type H
65 sqm



MASTER PLAN:

1. Reflective pond
2. Project signage
3. Boundary wall with spout water
4. Pylon sign
5. Spirit house
6. Guard house
7. Step colorful plant
8. Pedestrian gate
9. Vehicle gate
10. Drop Off
11. Stack waterfall
12. Garden lantern
13. Cascade wall
14. Feature wall w/vertical garden
15. Sitting terrace
16. Wrought iron decorative lamp
17. Private lift concealed with gagainitic lantern
18. Jacuzzi
19. Infinity Edge
20. Playground
21. Planter box with movable track
22. Mini driving range
23. Roof top lawn
24. Trellis roof with sitting area



1. Helipad
2. Pool terrace
3. Shower
4. Trellis
5. Shallow pool
6. Jacuzzi
7. Infinity edge
8. Rock garden
9. Private jacuzzi



